

for thingy

OQP's Chronometer

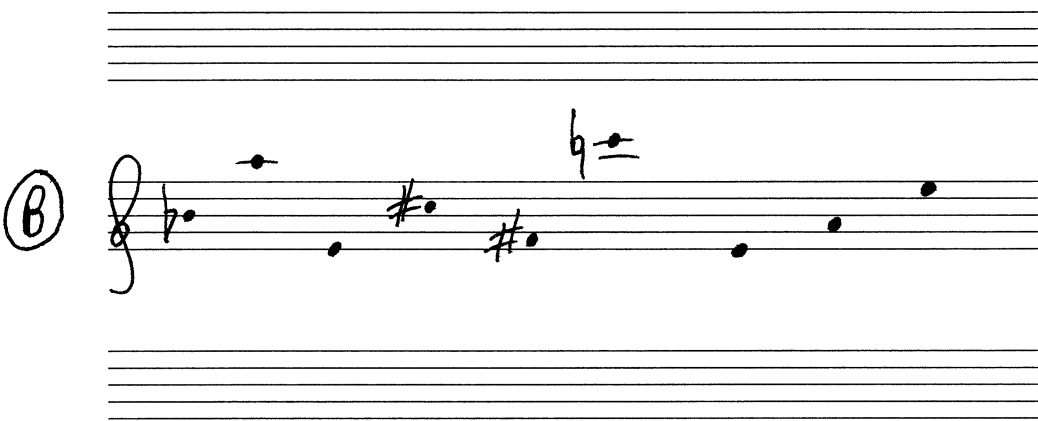
Carsou Cooman
(2011)

(A)



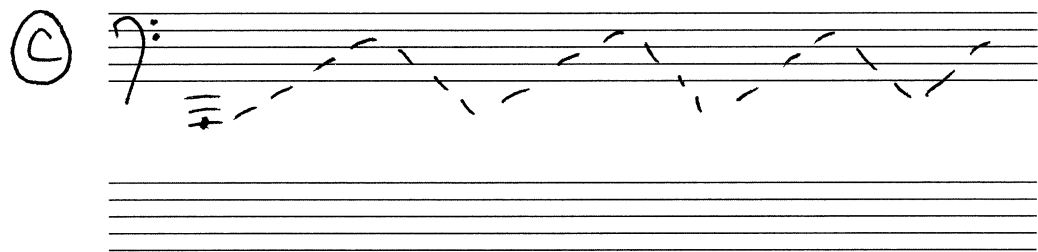
Handwritten musical notation for part A, consisting of two staves. The top staff uses a treble clef and contains two chord symbols: a C major triad (C-E-G) and a D major triad with a sharp sign (D-F#-A). The bottom staff uses a bass clef and contains a C major triad (C-E-G) and a D major triad with a sharp sign (D-F#-A). There are dotted lines between the chords on both staves, suggesting a sequence or a specific timing.

(B)



Handwritten musical notation for part B, consisting of two staves. The top staff uses a treble clef and contains a sequence of notes: C4 (quarter), D4 (quarter), E4 (quarter), F4 (quarter), G4 (quarter), A4 (quarter), B4 (quarter), C5 (quarter). The bottom staff is empty. There are sharp signs above the D and E notes, and a flat sign above the F note.

(C)



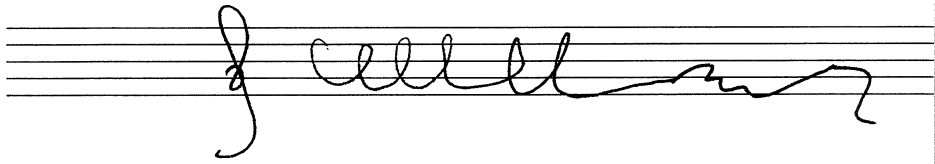
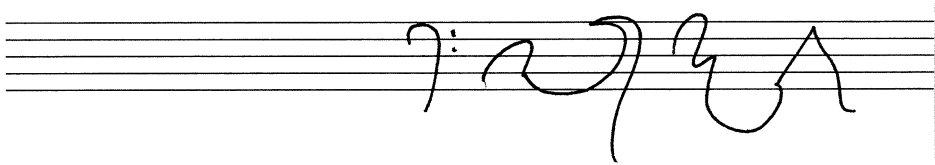
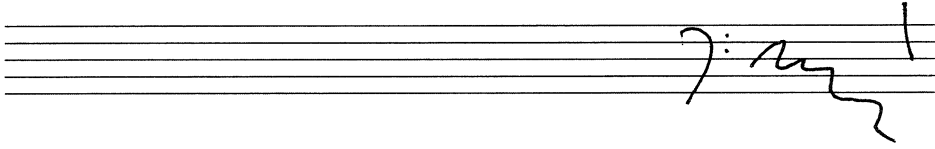
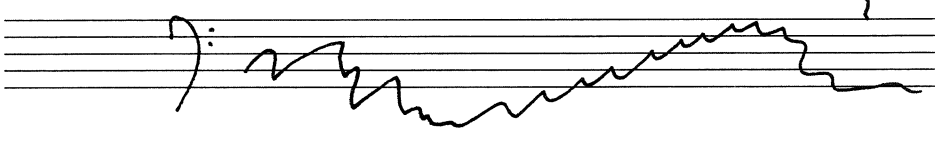
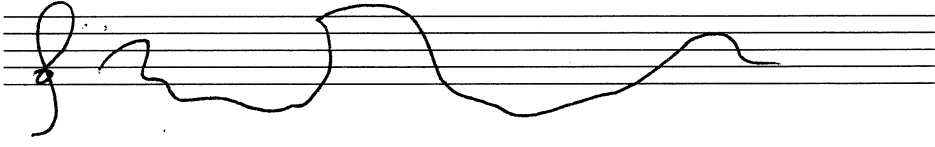
Handwritten musical notation for part C, consisting of two staves. The top staff uses a bass clef and contains a sequence of notes: C3 (quarter), D3 (quarter), E3 (quarter), F3 (quarter), G3 (quarter), A3 (quarter), B3 (quarter), C4 (quarter). The notes are connected by dashed lines. The bottom staff is empty.

(D)



Handwritten musical notation for part D, consisting of two staves. The top staff uses a bass clef and contains a sequence of notes: C3 (quarter), D3 (quarter), E3 (quarter), F3 (quarter), G3 (quarter), A3 (quarter), B3 (quarter), C4 (quarter). The notes are connected by solid lines. The bottom staff is empty.

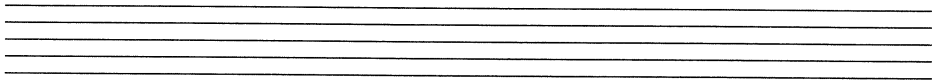
(E)



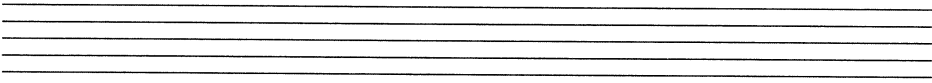
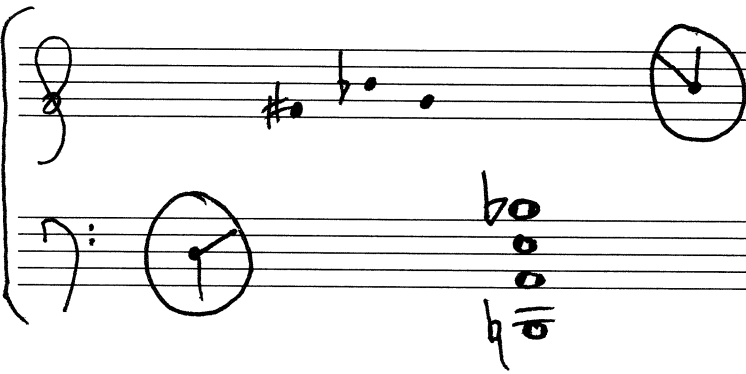
(F)



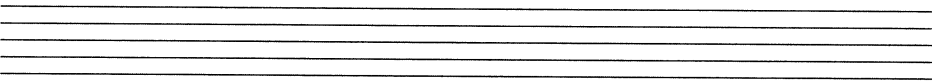
G



H



I



J



April 2011